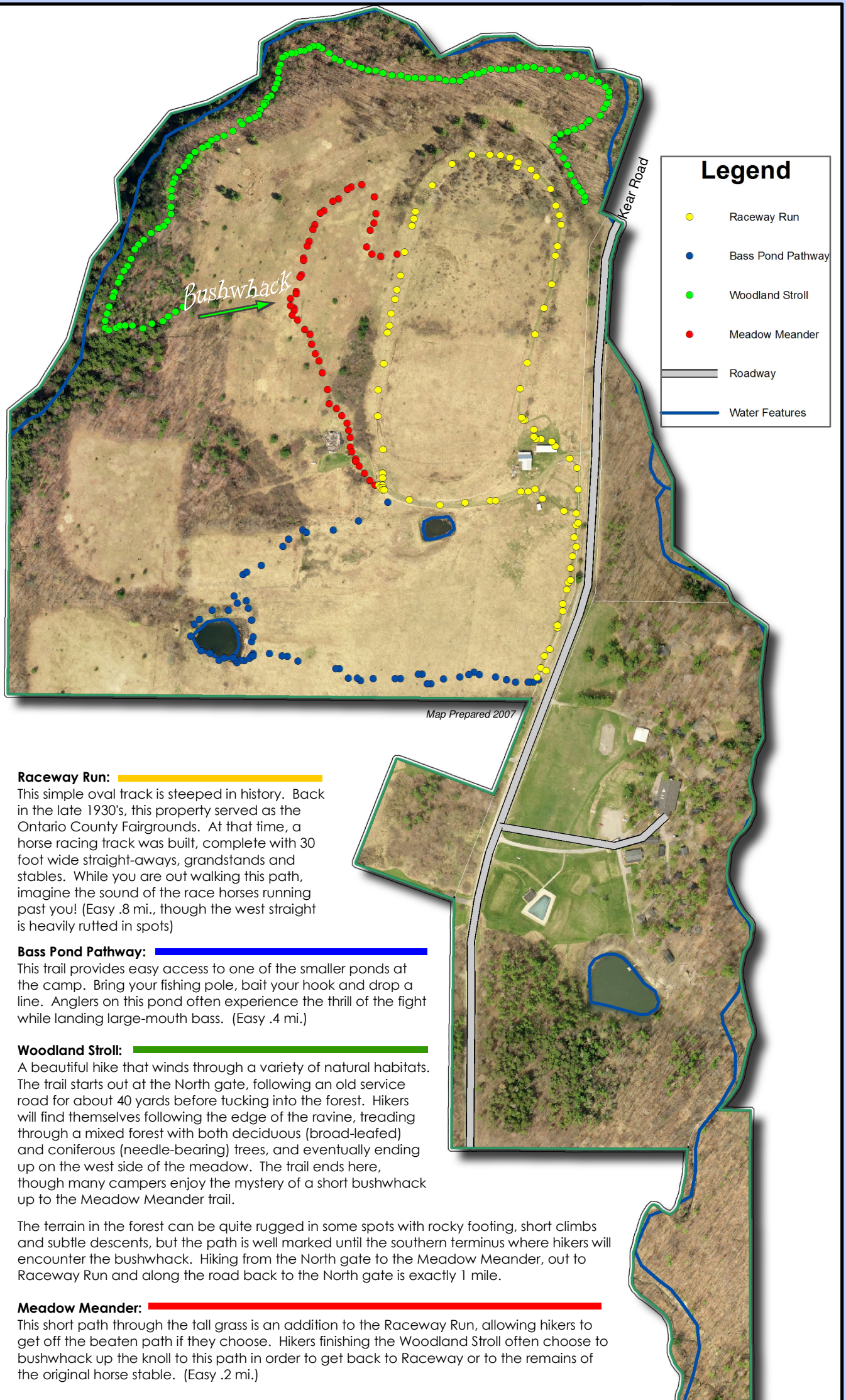




4-H Camp Bristol Hills

4437 Kear Road
Canandaigua, NY 14424



Raceway Run:

This simple oval track is steeped in history. Back in the late 1930's, this property served as the Ontario County Fairgrounds. At that time, a horse racing track was built, complete with 30 foot wide straight-aways, grandstands and stables. While you are out walking this path, imagine the sound of the race horses running past you! (Easy .8 mi., though the west straight is heavily rutted in spots)

Bass Pond Pathway:

This trail provides easy access to one of the smaller ponds at the camp. Bring your fishing pole, bait your hook and drop a line. Anglers on this pond often experience the thrill of the fight while landing large-mouth bass. (Easy .4 mi.)

Woodland Stroll:

A beautiful hike that winds through a variety of natural habitats. The trail starts out at the North gate, following an old service road for about 40 yards before tucking into the forest. Hikers will find themselves following the edge of the ravine, treading through a mixed forest with both deciduous (broad-leaved) and coniferous (needle-bearing) trees, and eventually ending up on the west side of the meadow. The trail ends here, though many campers enjoy the mystery of a short bushwhack up to the Meadow Meander trail.

The terrain in the forest can be quite rugged in some spots with rocky footing, short climbs and subtle descents, but the path is well marked until the southern terminus where hikers will encounter the bushwhack. Hiking from the North gate to the Meadow Meander, out to Raceway Run and along the road back to the North gate is exactly 1 mile.

Meadow Meander:

This short path through the tall grass is an addition to the Raceway Run, allowing hikers to get off the beaten path if they choose. Hikers finishing the Woodland Stroll often choose to bushwhack up the knoll to this path in order to get back to Raceway or to the remains of the original horse stable. (Easy .2 mi.)

0 125 250 500 750 1,000 Feet